

SAMPYO

15TH Floor, Ima BLDG 42, Jongro-1gil Jongro-gu, Seoul **TEL.** 02-460-7111 **FAX.** 02-464-0489
www.sampyo.co.kr

Be the Basis for the New



We will grow customers together
pursuing environment-friendly future value as
No.1 company in building materials.



Intro. Be the Basis for the New

- 04 About SAMPYO
- 06 Vision SAMPYO
- 08 History of SAMPYO

Part 1. Be the Basis for Materials

- 12 Cement
- 14 Aggregate
- 16 Cementitious Materials

Part 2. Be the Basis for Construction

- 20 Ready-mixed Concrete
- 22 Mortar
- 24 Concrete

**Part 3. Be the Basis for Recycling
Environment Resources**

- 28 Steep Scrap
- 30 Environmental Resources

**Part 4. Be the Basis for Research and
Development**

- 34 Railways
- 36 R&D Center / S-CONTEC
- 38 IT
- 40 Logistics
- 42 SAMPYO Groups

About SAMPYO

No.1 Company in Building Materials

SAMPYO has extended its future going business territory from infrastructure construction to environment-friendly business.

SAMPYO’s Five Major Businesses

Basic Materials for Construction	Cement / Cementitious Materials / Aggregate Ready-mixed Concrete / Mortar / Concrete
Eco-friendly	Environmental resources / Steel Scrap
R&D	R&D Center / Concrete Testing Laboratory
Railways	Railroad supplies / PST / Railroad Construction
Logistics-SI	Transportation·Load&unload / IT·Automation System

SAMPYO’S PHILOSOPHY



Materials	Construction	Recycling	R&D
Cement Aggregate Cementitious Materials	Ready-mixed Concrete Mortar Concrete	Environmental Resources Steel Scrap	Railways R&D Center IT Logistics

Vision

SAMPYO

SAMPYO in Harmony of Human and Technology

SAMPYO Group, future-oriented company
has taken the lead in the construction culture in
harmony of human and technology.

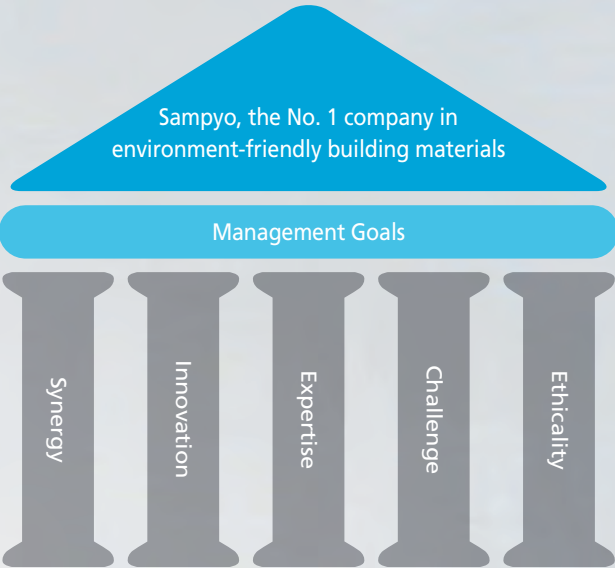
Vision

Sampyo, the No. 1 company in
environment-friendly building materials

Synergy Management Strategy	We maximize synergy by harmonizing the relevant business such as logistics and environment-friendly business based on the elementary construction material business.
Differentiated Products	We strengthen our competency through investment in R&D and accumulated know-how.
Future-going Value	Stable profit-making and differentiated value seeking

Vision
(Orientation)

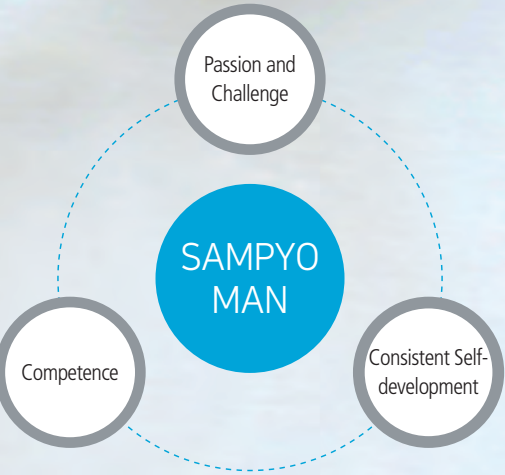
Core Value
(Criteria of Action)



Man Power

Talent with Passion and Ambition

SAMPYO man is ready to explore future based
on competence and consistent self-development.



History of SAMPYO

1960~1980

Start

- 1966. 12 Established Samgang Shipping
- 1974. 07 Changed the company name to Sampyo Industry
- 1976. 02 Started Aggregate Business
- 1977. 07 Started Ready-mixed Concrete Business
(Built and operated Seongsu-Poongnap Plants)
- 1980. 03 Began to run the Railways Business Unit
- 1982. 01 Obtained the KS mark for Ready-mixed Concrete Business
- 1982. 12 Established Dongnam Shipping (former Kyunghan Co.,Ltd)
- 1983. 01 Obtained a business license for shipping
- 1985. 11 Commenced the Preflex business
(No.1 Supplier in Korea since 1985)
- 1986. 04 1986. 04 Started the fly ash business

1990

Growth

- 1992. 02 Designated as a manufacturer for swingnose crossing
- 1992. 02 Obtained a license for railway/track construction/business
- 1993. 02 Established Gangwon Industry Scholarship Foundation
(now Jeonginwook Scholarship Foundation)
- 1993. 07 Established Concrete Technical Research Institute
- 1994. 09 Established SAMPYO Track (Now Sampyo Railway)
- 1996. 12 Established Hwanan Industry (now NEVEN)
- 1997. 04 Began to run a railroad switch factory in Osong
- 1997. 12 Achieved annual sales of 30 million tons of aggregate
- 1998. 06 Merged Namyang Stony Mountain Development,
Ilshin Mining with SAMPYO aggregate
- 1998. 07 SAMPYO RAILWAY obtained ISO 9001 certificate
- 1999. 12 Established Korea Cyber Logistics
(former SAMPYO Logistics)

2000

Stabilization

- 2000. 11 Established Railway Technical Research Institute
- 2000. 12 Established Sampyo Information System
- 2003. 08 Opened Maritime Affairs Office
- 2004. 07 Changed the company names of subsidiaries of
Sampho Group
- 2005. 03 SAMPYO entered into a MOU for joint investment
with Korea Resources Corporation
- 2005. 09 SAMPYO Information System developed the QC
program for ready-mixed concrete sites
- 2005. 11 Established NRC
- 2006. 02 Obtained a KS Mark on aggregate products
- 2006. 10 Late Chung, In-Wook, honorary president, selected
as one of the Korea's 60 greatest engineers
- 2007. 04 Launched 'BLUECON', highly functional ready-mixed
concrete brand
- 2008. 06 Kyunghan got a citation from the Prime Minister at
the 19th 'Day of Steel' award
- 2009. 10 Established SAMPYO Elementary Material

2010

Leap

- 2011. 07 Won the Grand Prize for green eco-friendly management
- 2012. 04 Completed construction of the slag plant in Dangjin
- 2012. 11 Completed construction of the slag refinement plant in Danyang
- 2013. 03 ChungInwook Scholarship Foundation received the Grand Prize for
social contribution
- 2013. 10 Converted to a holding company system (Holding company: SAMPYO)
- 2014. 11 SAMPYO Industry completed construction of the dry mortar plant in
Hwaseong
- 2015. 09 Undertook SAMPYO Cement (former Dongyang Cement)
- 2017. 10 Received a presidential citation with 'National Standardization Grand-
prix' on the World Standards Day
- 2018. 12 SAMPYO Industry Co., Ltd., the only company to attain certifi-cation
from the International Accredited Testing Laboratory in the Integrated
Quality Test Center area
- 2019. 03 Established SP Nature
- 2019. 09 SAMPYO Cement Co., Ltd. joined World Cement Association (WCA)
as the first company in Korea
- 2019. 11 Developed Korea's first Mega Double Wall
(approved by the National Academy of Engineering of Korea)
- 2020. 09 SAMPYO Industry Co., Ltd. obtained low carbon product certification
in "specifications for three RMC products"
- 2020. 11 SAMPYO Cement Co., Ltd. recorded 300 million tons in cumulative
production volume of cement clinker as a single plant for the first
time in Korea
- 2020. 11 Introduced the web and mobile integrated order platform "SAMPYO
SMART ORDER" for the first time in the building material industry
- 2021. 08 Announced the 2050 Carbon Zero Roadmap of SAMPYO
- 2022. 11 Entered into the Real Estate Development Business, Completed sales
of Hillstate DMC
- 2022. 11 Established SAMPYO Cement ESG Committee
- 2023. 07 Merger of SAMPYO Corporation and SAMPYO Industry



SAMPYO

SAMPYO
Industry

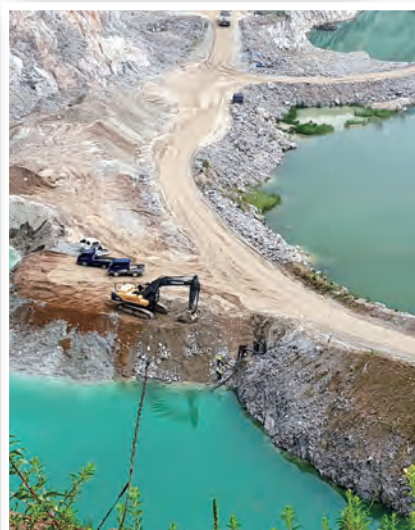
SAMPYO
Cement

SP NATURE

SP S&A

SAMPYO
P&C

SAMPYO
Railway



Part 1

Be the Basis for Materials

SAMPYO is a world top-class construction material manufacturer and supplier such as cement, aggregate, and cementitious materials. We lead the construction material field based not only on the outstanding quality and advanced technology but also eco-friendly growth and ceaseless study for customer satisfaction.

Cement

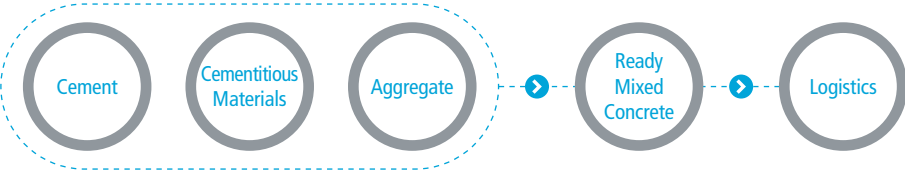
We are the world best quality cement supplier with leading manufacturing technology



Samcheok Plant

SAMPYO has taken the lead to produce eco-friendly high quality cement

The First Vertical Integration in the Industry



The Leading Production Technology and Quality

- 1980:** Korea's first calcined fuel shift from bunker C oil to flaming coal
 - Contributed to energy reduction
- 1995:** Obtained a cement quality test certificate from ministry of construction of Japan
 - Exported over 200,000 tons annually
- 1999:** Obtained LIP(Laboratory Inspection Program) certification by an affiliate authorization under U.S. Department of Commerce - Evaluated as excellent in technology and reliability
- 2019:** Samcheok-si donated household waste to fuel pre-treatment facility
 - A leap for ESG management
- 2021:** Obtained of occupational health and safety management system certification
- 2023:** Recognized for Excellence in ESG Corporate Governance by KCGS
 - The Only Cement Company

Product

Portland Cement
(General engineering and Concrete Construction)

It is generally called 'Cement' and classified into five types based on quality and use.

Fly-ash · Granulated Blast Furnace Slag Cement

It is environment-friendly and resources and energy saving and it improves concrete durability.

Special Cement (Rapid Low Calorific Cement, Foam Concrete Cement)

Special Functioning Cement for Special Use



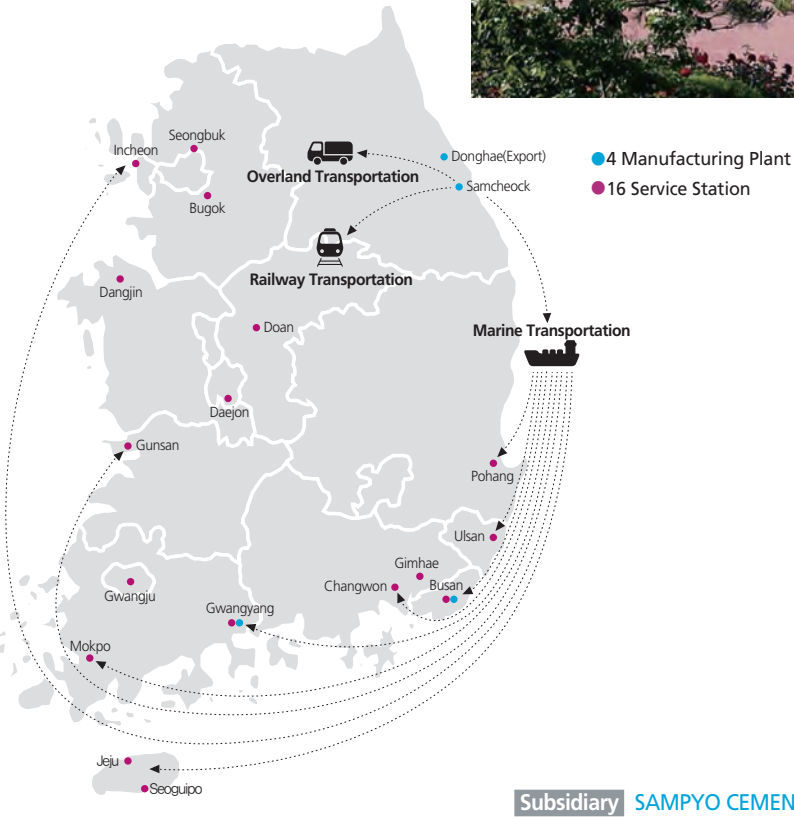
Plant

No.	Location	Classification
1	Samcheock Plant	Manufacturing Plant
2	Donghae Plant	Manufacturing Plant
3	Busan Plant	Manufacturing Plant
4	Gwangyang Slag Plant	Manufacturing Plant
5	Incheon Business Sites	Service Station
6	Bugok Business Sites	Service Station
7	Dangjin Slag Plant	Service Station
8	Daejon Business Sites	Service Station
9	Doan Business Sites	Service Station
10	Ulsan Business Sites	Service Station
11	Pohang Business Sites	Service Station
12	Busan Business Sites	Service Station
13	Changwon Business Sites	Service Station
14	Gimhae Business Sites	Service Station
15	Gwangju Business Sites	Service Station
16	Gwangyang Business Sites	Service Station
17	Gunsan Business Sites	Service Station
18	Mokpo Business Sites	Service Station
19	Jeju Business Sites	Service Station
20	Seoguipo Business Sites	Service Station

Production Capacity

Unit : 1,000 ton

Manufacturing Plant	Clinker (semi-cement product)	Annual Production Capacity	
		Portland Cement	Granulated Blast Furnace Slag Cement
Samcheock Plant	10,045	9,576	
Donghae Plant		1,346	
Gwangyang Slag Plant			1,200
Busan Slag Plant			800
Total	10,045	10,922	2,000



Aggregate

We produce good quality aggregate through premium rocks and the newest facilities



Hwaseong Quarry

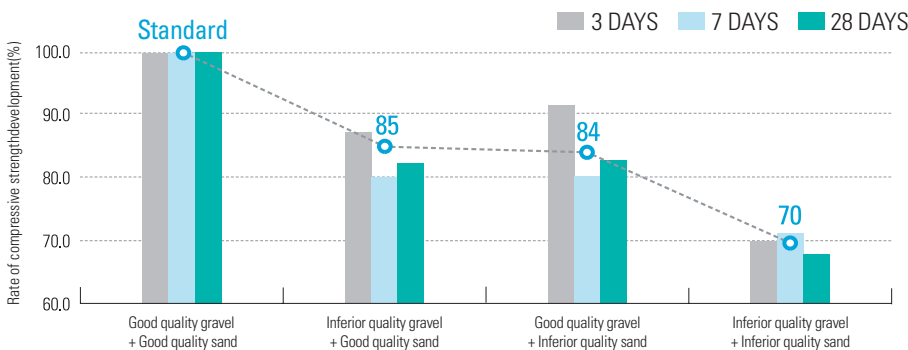
SAMPYO leads the aggregate business with the largest supply and the highest quality



Korea's 1st KS Mark obtaining excellent and stable quality aggregate

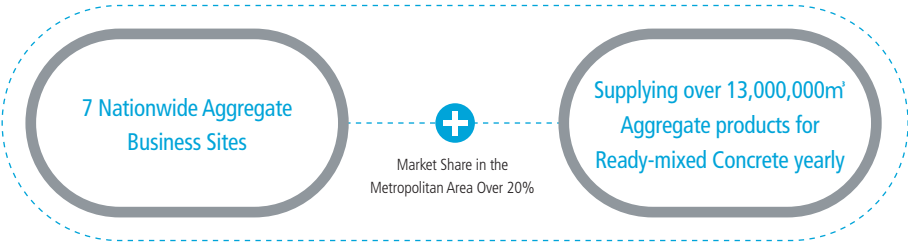
SAMPYO has lead the aggregate business field with thorough quality control and systemic quality management. We obtained Korea's 1st KS Mark in aggregate and obtained more KS Marks for all 4 aggregate sites.

Effect of the aggregate quality on concrete quality (strength revelation ratio)



SAMPYO has ranked No.1 in 'Aggregate Extraction Capacity Assessment' since 2007

We supply over 20% of the total demand in the capital area. We also deliver aggregate products to Choongcheong province and Busan.



No.1 high-quality aggregate supplier

We run our own stony mountain, muck pile, and marine sand sites to stably supply aggregate products to the capital area.

Current Status of the Sites

Unit : m³/year			
Classification	No.	Location	Capacity
Quarry	1	Yeoncheon	1,700,000
	2	Yangju	4,000,000
	3	Anseong	1,600,000
	4	Yesan	1,500,000
Sea sand	5	Hwaseong	1,100,000
	6	Yongin	800,000
	7	Incheon	2,000,000



SAMPYO No.302 (Sand-collecting Ship)

Subsidiary SAMPYO INDUSTRY / SP NATURE / NRC



Cement Materials

Basic Material recycled by-products generated from steel mills and power plants



Dangjin Slag Plant

SAMPYO sets the new standard for eco-friendly green growth and basic material industry

Environment-oriented basic materials

We process fly-ash generated in a blast-furnace slag and dust coal combustion process to alternate cement products.

The largest capacity in Korea

Through our nationwide production and supply networks, we stably supply fly ash, ground granulated blast-furnace slag and blast-furnace slag cement all over the country.

Slag
2,400,000
tons

Fly-Ash
2,500,000
tons

Outstanding technology and know-how

We develop high quality low-calorific cement product through constant R&D. Especially our cement made out of blast-furnace slag has been approved as an outstanding product by Ministry of Land, Infrastructure, and Transportation and Ministry of Trade, Industry, and Energy.



Blast - Furnace Slag Cement

Blast furnace slag cement is cement mixed with non-metal by-products generated in the production process of pig iron in a furnace.

- Excellent long-term strength and reduction of concrete hydration heat
- Above-average property revelation in comparison with the concrete substituted with fine particles of blast furnace slag at the same content

Ground Granulated Blast - Furnace Slag

Ground Granulated Blast - Furnace Slag is processed product using the non-metal by-products generated in the production process of pig iron in a furnace.

- Concrete cost saving and excellent long-term strength
- Excellent chemical resistance and sea water resistance
- Energy saving and eco-friendly material
- Alkaline aggregate reaction control and low hydration heat

Fly-Ash

Fly-Ashes are cinder particles generated in coal combustion process at a thermoelectric power plant and collected by a dust collector in the dust coal combustion furnace.

- Long-term strength and water tightness improvement
- Fluidity improvement and hydration heat reduction
- Alkaline aggregate reaction control
- Resistant to sulfate

Korea's Biggest
Supplier

2,500,000
ton/year

Plant



Dangjin Slag Plant



Cheonan Slag Plant



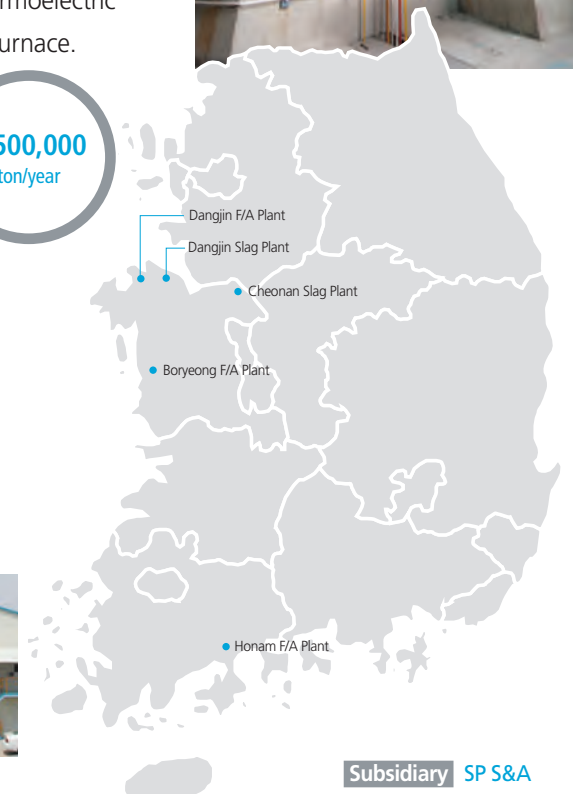
Dangjin F/A Plant



Boryeong F/A Plant



Honam F/A Plant



Subsidiary SP S&A

Ready-mixed Concrete	20
Mortar	22
Concrete	24



Part 2

Be the Basis for Construction

SAMPYO has created synergy based on the vertical sequence production in all fields such as ready-mixed concrete, mortar and concrete since its foundation in 1966. SAMPYO is a matchless market leader with excellence in both quality and technology.

Remicon

Constant R&D on quality and the Optimal supply network



East Seoul Plant

SAMPYO has satisfied customers with good quality and nationwide network



Excellent quality control and constant R&D

All plants of SAMPYO obtained the KS MARK and SAMPYO has been ranked No.1 on quality maintenance and quality satisfaction in ready-mixed concrete for 7 consecutive years since the company introduced SKS, further strict quality-control standards. Through ceaseless R&D, SAMPYO has developed various special functioning concrete products and launched 'BLUECON', the 1st special functioning concrete brand in Korea.

Prizes and Certificates

- Awarded by Ministry of Trade, Industry and Energy at the Concrete Technology Management Competition (2023)
- Low carbon product certification (2020~)
- Minister of Culture, Sports and Tourism Citation (2019)
- EPD certification (2019)
- Presidential Citation at the National Standardization Award (2017)
- Prime Minister Citation at the National Standardization Award (2013)
- Minister of Knowledge Economy Citation at the KS Mark Award (2012)
- Ranked No.1 in the ready-mixed concrete industry for 7 consecutive years(2011~2017) by KS-QEI

Customer-satisfying supply network



Leader in the ready-mixed concrete industry

- Shipments in the capital area – occupies more than 15% of the market
- Ready-mixed concrete production capacity – 13,000,000m³
- Nationwide ready-mixed concrete plant – total 16 plants
- Applicable to – capital area, Gwangju, Busan

Ready-Mixed Concrete Production Sites



Hwaseong Plant



Seobu Plant



Songdo Plant



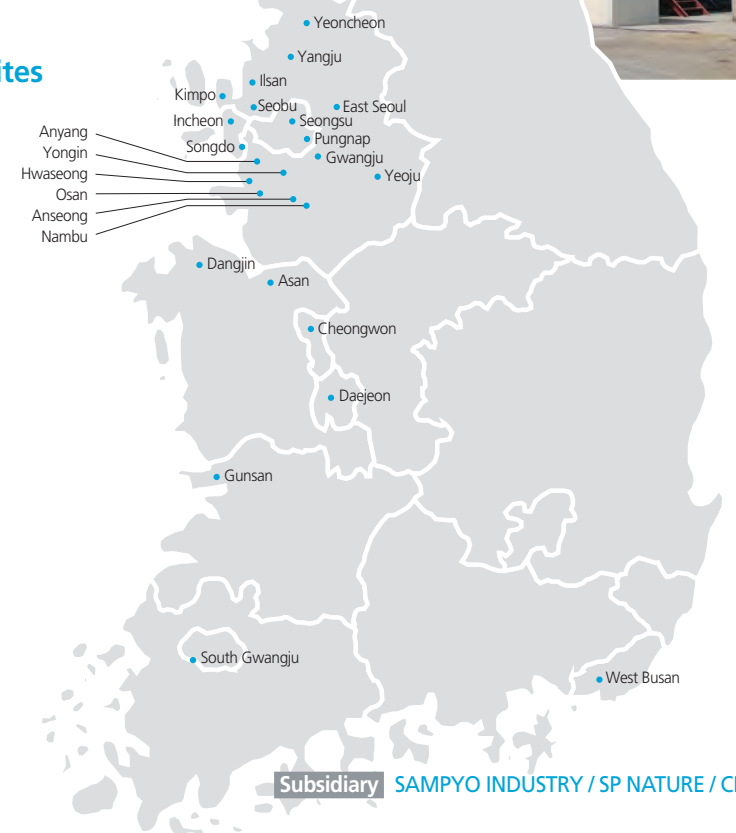
Anyang Plant



Anseong Plant



Yangju Plant



Subsidiary SAMPYO INDUSTRY / SP NATURE / CHUNGAM



Dry Mortar

Produce high quality products based on stable raw materials supply and operate automation shipping system



Incheon Plant

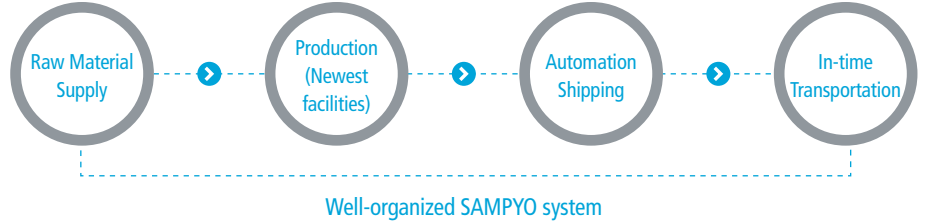
SAMPYO is proud of superior quality our product

High quality dry mortar production

- Ceaseless quality improvement through R&D on materials by SAMPYO laboratory (mortar R&D team)
- Guarantee the best quality based on SAMPYO's cutting-edge production facilities and strict quality control system

'SAMPYO' synergy effect

- Stable supply of aggregate and cement, raw materials for mortar from the subsidiaries
- Systemic integrating system to control from raw material supply and production quality control and rapid transportation for maximized customer satisfaction.



Good accessibility to the metropolitan area

- Two plants in the metropolitan area occupy 20% of the market within 2 years since its establishment
- Completed a nationwide supply chain from the metropolitan area(Incheon, Hwaseong) to the central(Sejong), and the southern(Gimhae) region

SAMPYO Mortar, a new-generation dry mortar

- MS in the metropolitan area - MS 28%
- Mortar production capacity – 3.1 million tons
- Nationwide mortar plant – Hwasenong, Incheon, Gimhae, Sejong
- Suppliable – nationwide

Plant



1st Plant

- Located in Hwaseong, Gyeonggi province
- Production capacity: 700,000 ton/year



2nd Plant

- Located in Incheon
- Production capacity: 850,000 ton/year



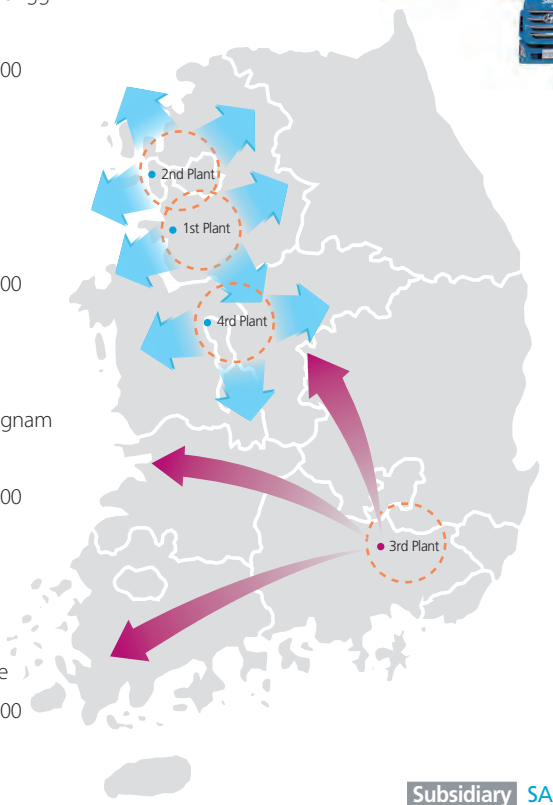
3rd Plant

- Located in Gimhae, Gyeongnam province
- Production capacity: 700,000 ton/year



4th Plant

- Located in Sejong province
- Production capacity: 850,000 ton/year



Concrete

We produces eco-friendly pre-casted PC and pile products that are assembled on the site



Cheongju Plant

SAMPYO provides the best PC products through experienced know-how and constant R&D



PC (Precast Concrete)

Pre-casted or pre-assembled structure, exterior materials, blocks, tunnel and underdrain

Environment-friendly assembling-typed Precast Concrete

- We drastically cut carbon dioxide emissions with the Precast Concrete construction method that shortens construction time by 20 percent compared to ready-mixed concrete placing method on the site.
- We newly developed PC product that combined fly ash and blast furnace slag powder to dramatically reduce CO2 emissions.

Major PC Engineering Methods

- STRUCTURAL RIBBED SLAB SYSTEM (SRS Method)
- JOINTLESS RIBBED SLAB SYSTEM (JRS Method)
- DOUBLE-WALL Method



STRUCTURAL RIBBED SLAB SYSTEM (SRS Method)

- PC quantity minimization and weight lightening (EPS BLOCK installation)
- Slag and crack control of heavy and/or long-span structure and equipment (Bottom Flat type)
- Applicable to: Large size structures such as logistics center and knowledge industry center



JOINTLESS RIBBED SLAB SYSTEM (JRS Method)

- Optimal System for underground parking lot with excellent air insulation and price competitiveness
- Eco-friendly engineering to dramatically reduce construction wastes
- Applicable to : Parking lot, Car Sales Complex



DOUBLE-WALL Method

- PC wall structure engineering to build a concrete wall between two PC panels on the site
- Manpower save and process simplification
- Applicable to: APT(core, underground wall concrete), Knowledge Center (dormitory), Townhouse etc

PILE (Concrete PILE)

Highly strong concrete pile to be used for construction and civil engineering

High quality concrete pile production

- We established the first fully equipped, large-caliber specialized production line in a plant in Korea in 2009.
- We succeeded to develop and commercialize the ultra-strong PHC Pile for the first time in Korea in 2011.

Large Caliber PHC PILE (700mm~1,200mm)

- Due to large caliber PHC pile with high bearing capacity, we can save both construction cost and time.

Ultra-strong PHC PILE

- High bearing capacity with 110MPa compression strength which is higher than the one of the general PHC PILE(78.5MPa).
- Applicable to all types of pile (Φ500~Φ1,200)





Part 3

Be the Basis for Recycling Environment Resources

SAMPYO, an eco-friendly enterprise, focuses on the recycling projects including urban mining based on recycling of iron scrap, steel byproduct and steel waste, and other non-steel byproduct and demolition of construction waste.

Steel Scrap

Steel recycling to process recycled steel to usable resources

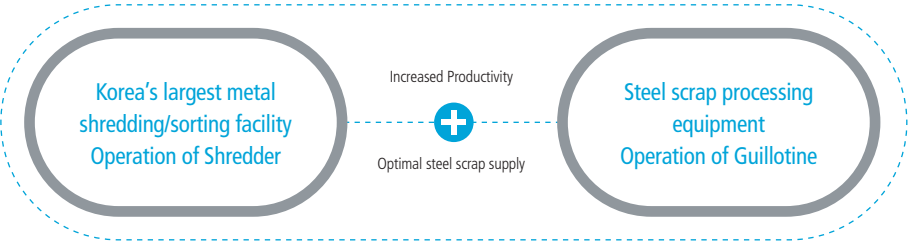


S/D Factory

SAMPYO thinks environment and contributes to development of the steel industry

Mass Production through Mechanization

We supply the best quality steel scrap based on the mass production system and high productivity with Korea's largest shredder and guillotine facilities.



Stable Raw Material Supply through the Domestic Power Supply

SAMPYO raised the efficiency of production through the mass production system based on the best shredder and guillotine facilities in the country to provide the best quality iron scrap for steel manufacture companies.

Shredder Plant

Shredder is to shred scrapped cars and electronic devices and to sort steel from non-steel metals in the process.

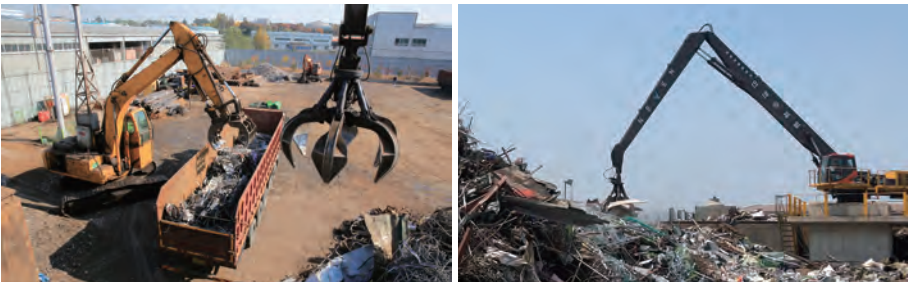
- Facility Spec. : 4,000HP Shredder (Korea's largest shredder, Pohang)
- Production Capacity : 10,000 ton/ month
- Characteristics
 - small and even scraps with better insertability
 - small and dense volume
 - high collect rate and high cost efficiency
 - good solubility for reduced dissolution time and power cost
 - soft and free from damages of furnace wall and facility



Guillotine Shear

Guillotine is a facility to compress and cut light to middle-weighted long steel scraps into small pieces less than 1m² to put the pieces into an electric furnace.

- Facility Specification : 1,600 tons
- Production Capacity : 100,000 ton/year



Recycling

We are specialized in eco-friendly disposal and recycling of steel by-products and construction wastes

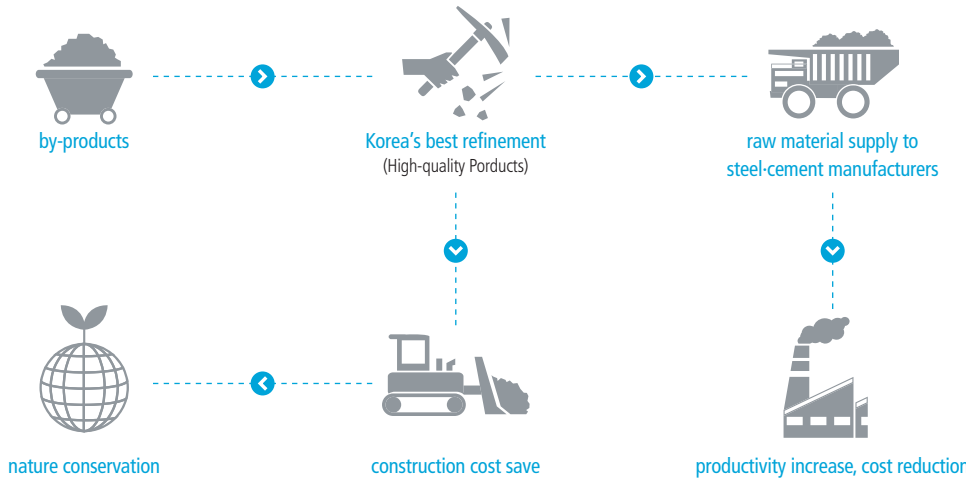


Pohang Office

We open a greener world through reasonable recycling

Steel by-products/Slag

We shred and collect byproducts including plating metal, mill scale, slag, sludge and dust particles from steelworks and steel manufacturers to recycle them as raw materials for steel and cement industries and foundation materials for construction.



Construction wastes/Demolition

We demolish scaffold structures, collect and deliver construction wastes, and process other construction-related matters to produce recycled aggregate from construction wastes.



Incineration/Dry

We operate a plant in the optimal hygienic conditions to incinerate combustible waste and dry various kinds of sludge with the heat from the incineration, contributing to environmental conservation.

- Incineration Capacity : 72ton/day
- Dry Capacity : 144ton/day



Resources Recycling for Cement

We recycle by-products from industrial sites and provide them to cement and other related companies.





Part 4

Be the Basis for Research and Development

SAMPYO is recognized to hold No.1 quality and technology in the country based on innovative technology development and its know-how. Its railroading skills are already on the world-class level and the institute of technology focuses on development of various innovative products and construction method. Its most talented people, best skills, factory automation know-how based on IoT, and well-set logistics technology help SAMPYO become a front-running company in the construction material field.

Railway

The only total railway engineering enterprise to produce railway products and to construct or maintain the railway facilities



Osong plant

**We are Korea's
No.1 railroad
track component
manufacturer**



World Class Product
Certification

Best railroad track component production

- We design and manufacture railway products, such as a turnout and BFLJ (Buried Folding Lattice Joint) system with developed technology and high-tech facilities.
- We export them to foreign countries including Taiwan, Iran and Indonesia, obtaining reputation for the world's first class products and new technology of construction.



Korea's first 'pre-fabrication concrete slab track' production

- The most advanced and eco-friendly railway system that allows operators to assemble and construct factory-made slab panels on the spot and helps to cut construction cost as well as facilitate maintenance of the work.

Korea's best track construction and maintenance

- We have accumulated experiences and technology on track building.
- We take the lead in the railway track construction & maintenance market with our cutting-edge facilities such as railroad abrasion facility, mobile flashbutt welding vehicle and MMT.



Railway Technology Institute

- We lead the domestic railway technology through technical cooperation with domestic and foreign institutes.



Subsidiary **SAMPYO RAILWAY**
/ PAN TRACK

R&D Center

The R&D Center develops eco-friendly new products and customizing construction engineering methods



Concrete Technical Research Institute

S-CONTEC (Sampyo CONcrete Testing & Evaluation Center)

We carry out concrete testing·inspection·certification and quality inspection of construction materials



S-CONTEC

SAMPYO creates new value based on our specialized technology and expertise



Customized technology development through joint R&D with other universities and corporations

- We collaborate with other construction and admixture companies and university laboratory to develop various and applicable technology in onsite for the product production to meet the customer needs.
- Constant study on advanced technologies and trends by releasing and issuing research papers at the relevant domestic-international conferences.

Development of eco-friendly and innovative new materials and construction methods

- We develop products with superior functions considering various factors including solidity, safety, weight lightening, and aesthetic aspect.
- We develop ways to recycle resources and develop eco-friendly products to reduce carbon dioxide emission.

R&D Center of
construction materials



R&D Center for
Environmental Resources

We provide world-class testing ability and credibility



Quality tests for construction materials and issues test reports

- The only enterprise in the domestic construction material field that is recognized as a KOLAS by Korean Agency for Technology and Standards in MTI (Ministry of Trade and Industry).
- Registered construction technology service enterprise (specialized institution for quality test approved by Ministry of Land, Infrastructure, and Transport)
- Hold around 80 testing equipment

KOLAS

We approve a test and issue test reports as an internationally authorized testing institution.

- Category : Cement, Aggregate
- Our test reports are as effective as other test reports issued by 89 institutions of 86 nations, the members of ILAC

Construction & Technology Service

We execute quality testing on construction materials and issue test reports.

- Category : Concrete and Aggregate
- Approved as a quality test specialized agency by Minister of Land, Infrastructure, and Transportation due to our expertise.

IT

We provides the best solutions for production, quality, marketing and logistics



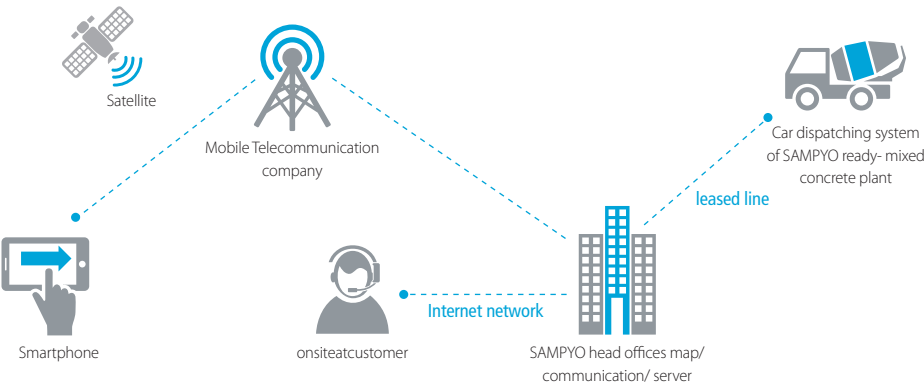
In the era of the 4th industrial revolution, information and communication technology are being used in Building Materials field to increase production efficiency and strengthen competitiveness

System Integration/Operation support
Provide construction and operation services of information systems (MES, ERP, etc.) optimized for the Building Materials business to internal and external customers by utilizing the latest ICT technologies such as AI, computer vision, and Alot.



Automation Solutions

- Provides integrated automation solution optimized for building materials production sites such as facility control and panel production using PLC and HMI
- Establishment/operation of integrated shipping room system by region
- Establishment/operation of the industry's first unmanned/unstoppable entry and exit system

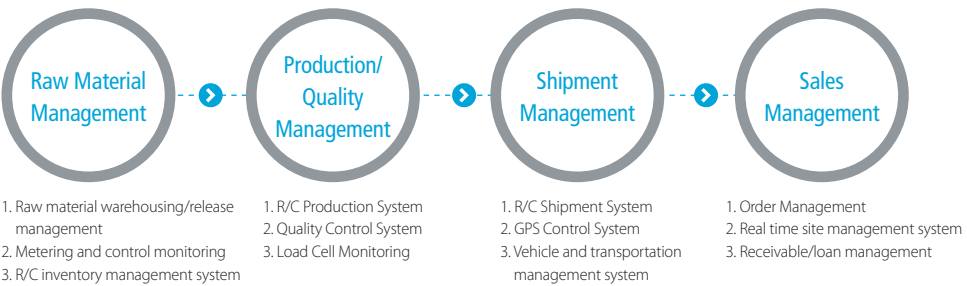


BLUECON PARTNERS

Supporting continuous shared growth with customers by establishing an integrated system for group customers

- Mobile : Support for a work environment without time/space constraints
- ERP : Industry-specific ERP construction support
- Sales management : Real-time shipment management and support for bond and credit management
- Logistics management : Reduce logistics costs and strengthen competitiveness by establishing GPS shipping system and LBS
- Production management : Real-time production status monitoring support
- Automation : Receiving, production, shipping, fueling system installation and operation support

Ready-mixed concrete-aggregated automative management system



Logistics

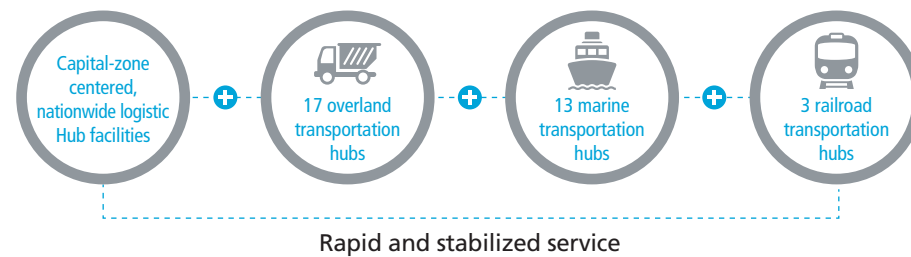
We established an economic, rapid, and accurate network by introducing high-tech GPS system and securing nation-wide logistics hubs.



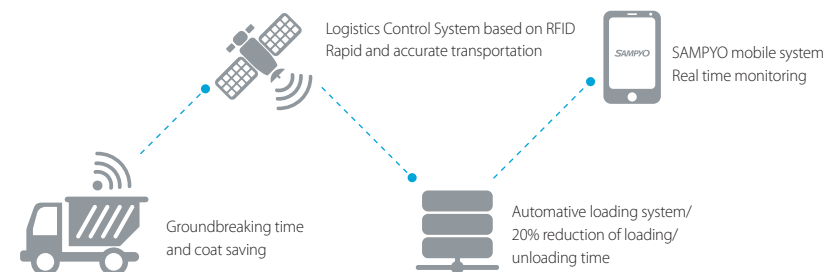
Sampyo No.5

**We have Korea's best
logistics network
in construction
materials**

Optimal Logistics infrastructure



Advanced GPS logistics system



Logistics Service Network

M/T(Mixer Truck)

We have a nation-wide network to provide ready-mixed concrete at optimum time and operate a shipment information system for customer convenience.

BCT(Bulk Trailor)

We take the lead in the logistics market by delivering raw materials such as cement, slag, cementitious materials, and fly-ash via our 350 vehicles.

D/T(Dump Truck)

We operate a national kernel base, run the most dump trucks in the country, and increase distribution efficiency by winning more orders to contribute to cost reduction.

F/C((Flat-board Trailer)

We deliver piles, PC beams, and other steel products to construction sites rapidly and accurately based on self-production hubs.

Marine Transportation/ Shipping

We take the lead in the marine transportation market for the domestic cement by utilizing both cement vessels and general cargo ships for coastal production factories. Keep collecting slag from steelworks sand sea sand, a key material for construction, for stable supply.



Logistics hubs and Location

Classification	Number of site	Location
●Overland Transportation	17	Yangju, Hwaseong, Cheonan, etc.
●Marine Transportation	13	Samcheok, Busan, Jeju, etc.
●Railway Transportation	3	Bugok, Daejeon, Doan
Total	33	

Aggregate Stony Mountain  Muck Pile

Subsidiary **SAMPYO INDUSTRY**

Sampyo Group

Material	Company	Address	Telephone
Ready-mixed concrete	SAMPYO Industry	14 th floor Ima BLDG. 42, Jongro 1gil, Jongro-gu, Seoul	02-6270-0461
Cement	SAMPYO Industry	20 Dongyanggil, Samcheok-si, Gangwon province	033-571-7000
Aggregate	SAMPYO Industry	14 th floor Ima BLDG. 42, Jongro 1gil, Jongro-gu, Seoul	02-6270-0606
	NRC	126 Soonwookgil, Cheongsan-myeon, Yeoncheon-gun, Gyeonggi province	031-832-9530
Cementitious Material	SP S&A	7 th floor Shinyoung BLDG. 731, Yeongdong-daero, Gangnam-gu, Seoul	02-6255-9300
Mortar	SAMPYO Industry	14 th floor Ima BLDG. 42, Jongro 1gil, Jongro-gu, Seoul	02-6270-0224
Railway	SAMPYO Railway	14 th floor Ima BLDG. 42, Jongro 1gil, Jongro-gu, Seoul	02-6270-0000
PC, PILE	SAMPYO P&C	14 th floor Ima BLDG. 42, Jongro 1gil, Jongro-gu, Seoul	PC 02-6270-0304 PILE 02-6270-0317
Civil Engineering	SAMPYO Industry	3 th floor Daewon N BLDG., 493 Olympic-ro, Songpa-gu, Seoul	02-6270-0274
Logistics Transportation	SAMPYO INDUSTRY	5 th floor Daewon N BLDG., 493 Olympic-ro, Songpa-gu, Seoul	02-6270-0505
IT Business	SAMPYO INDUSTRY	9 th floor Daewon N BLDG., 493 Olympic-ro, Songpa-gu, Seoul	02-473-2225
Environmental Resources / Steel Scrap	SP Nature	66 Seowonjae-ro, Nam-gu, Pohang-si, North Geongsang province	054-278-6774
Construction wastes / Demolition	Hongmyeong Industry	309 Jangjisan-ro, Gwangtan-myeon, Paju-si	031-941-8626
Technology Institute	SAMPYO Industry	140, Yangnonam-gil, Bibong-myeon, Hwaseong-si, Gyeonggi province	02-476-5483
Railway Technology Institute	SAMPYO Railway	384 Jeongjoongyeonje-ro, Osong-eup, Heungdoek-gu, Cheongju-si, North Choongcheong province	043-249-4481



SAMPYO's technology is ahead of the times



SAMPYO Group will set a standard for the elementary construction industry based on our advanced technology, well-known quality, and environment-friendly management and vision.